

2810 BUNSEN AVE
VENTURA, CA



FREE STANDING +/- 23,278 INDUSTRIAL MANUFACTURING BUILDING ON 1.19 ACRES

18' MINIMUM CLEAR HEIGHT

+/- 50 PARKING STALLS

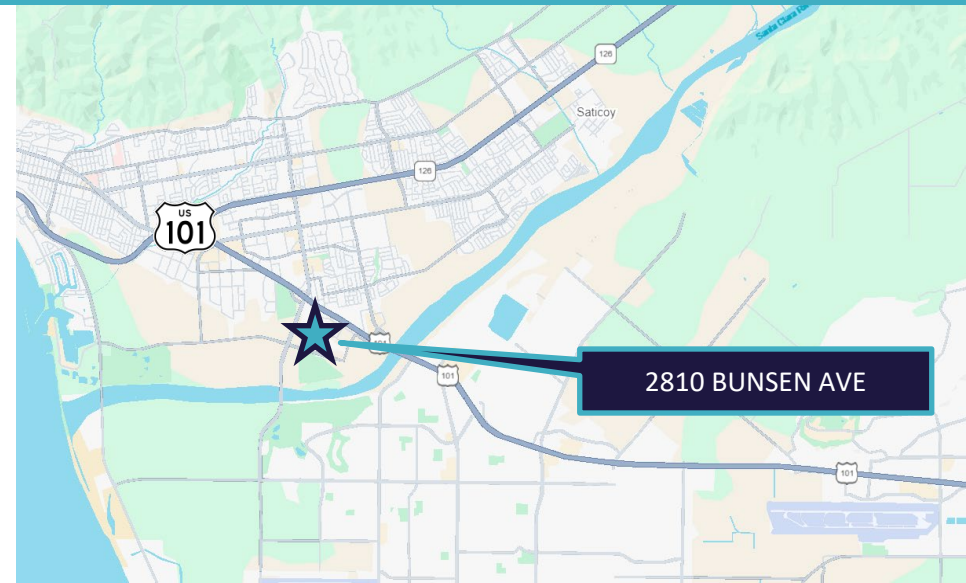
IMMEDIATE (101) FREEWAY ACCESS VIA VICTORIA AVE

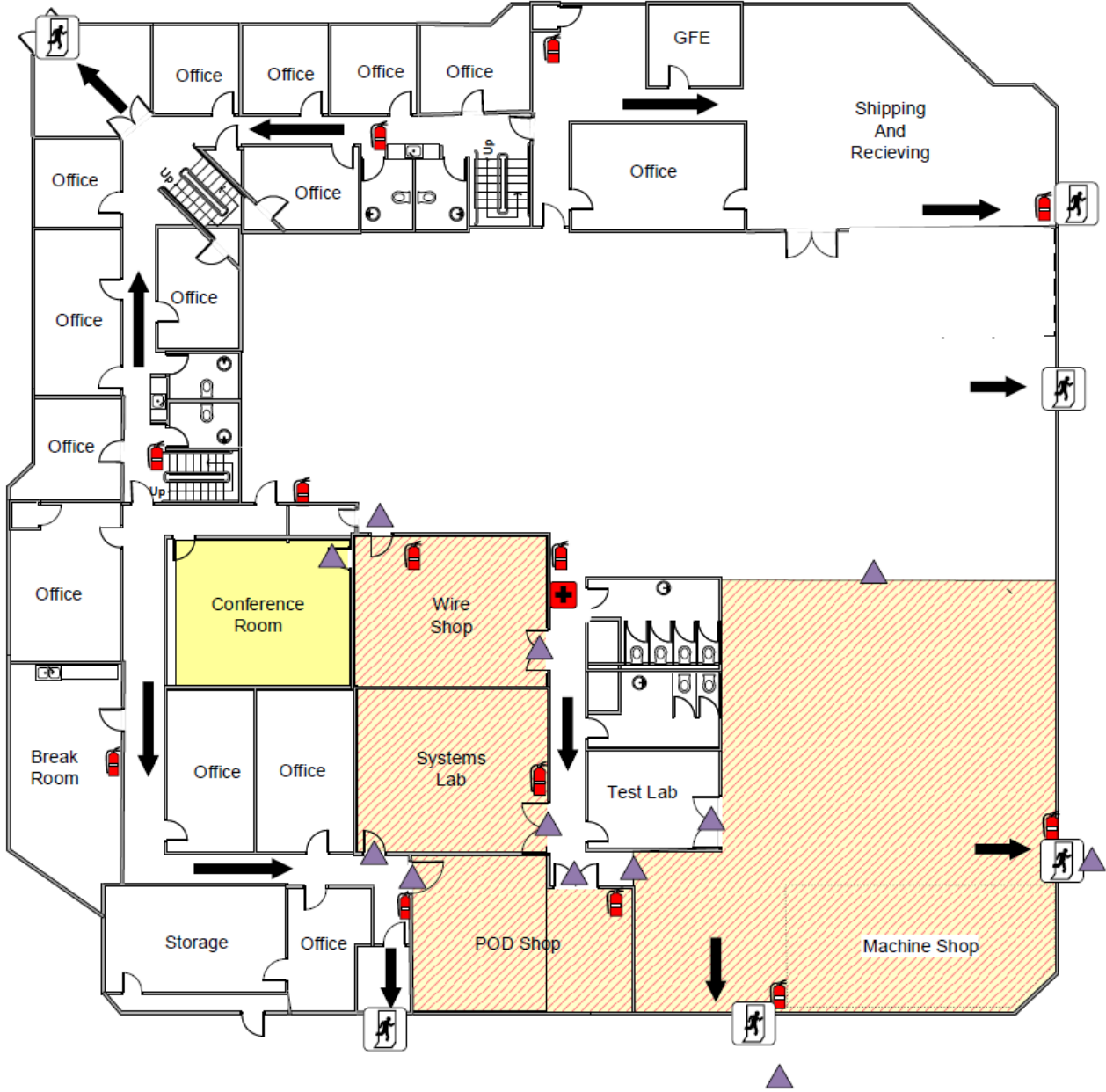
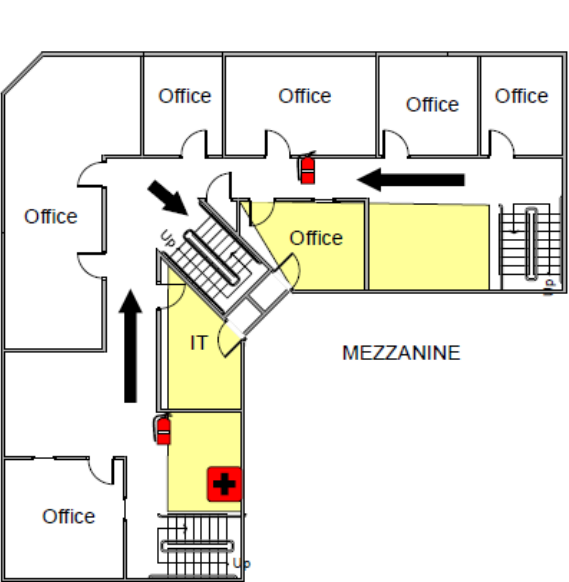
REMAINING SUBLEASE TERM – 01/31/2030



HIGHLIGHTS & FEATURES

- SIZE: +/- 23,278 SF ON 1.19 ACRES
- OFFICE: +/- 7,324 SF
- CLEAR HEIGHT: MIN 18' CLEAR
- LOADING: 4 GL LOADING POSITIONS
- PARKING: +/- 50 PARKING STALLS
- ZONING: MPD
- ACCESS: IMMEDIATE (101) FREEWAY VIA VICTORIA AVE
- REMAINING SUBLEASE TERM: 01/31/2030







LEASING CONTACTS

PAUL SIMS

Director

213.955.5153

paul.sims@cushwake.com

LIC # 02007631

ERIK LARSON

Executive Managing Director

213.955.5126

erik.larson@cushwake.com

LIC # 01213790

CHRIS TOLLES

Executive Managing Director

213.955.5129

chris.tolles@cushwake.com

LIC # 01459899



**CUSHMAN &
WAKEFIELD**

Cushman & Wakefield

900 Wilshire Blvd, Ste 2400

Los Angeles, CA 90017

cushmanwakefield.com

©2022 Cushman & Wakefield. All rights reserved. The information contained in this communication is strictly confidential. This information has been obtained from sources believed to be reliable but has not been verified. NO WARRANTY OR REPRESENTATION, EXPRESS OR IMPLIED, IS MADE AS TO THE CONDITION OF THE PROPERTY (OR PROPERTIES) REFERENCED HEREIN OR AS TO THE ACCURACY OR COMPLETENESS OF THE INFORMATION CONTAINED HEREIN, AND SAME IS SUBMITTED SUBJECT TO ERRORS, OMISSIONS, CHANGE OF PRICE, RENTAL

