



Fully Renovated Distribution Space
Brand New Offices & Secured Yard
Prime Western Industry Location
Immediate Proximity to (60) Freeway

24,592 & 46,653 SF AVAILABLE FOR LEASE

SALT LAKE INDUSTRIAL CENTER

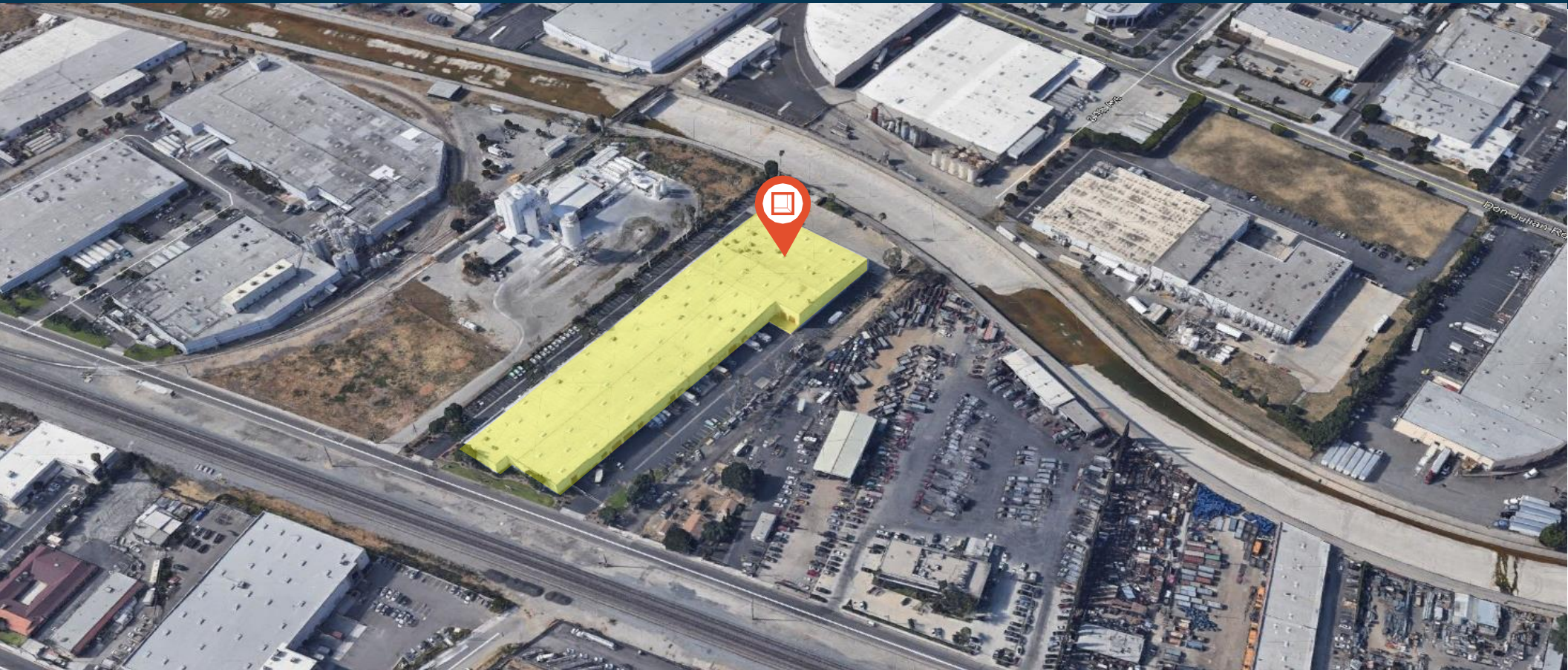
14955-14971 Salt Lake Ave. | City of Industry, CA 91702



**Rexford
Industrial**



**CUSHMAN &
WAKEFIELD**

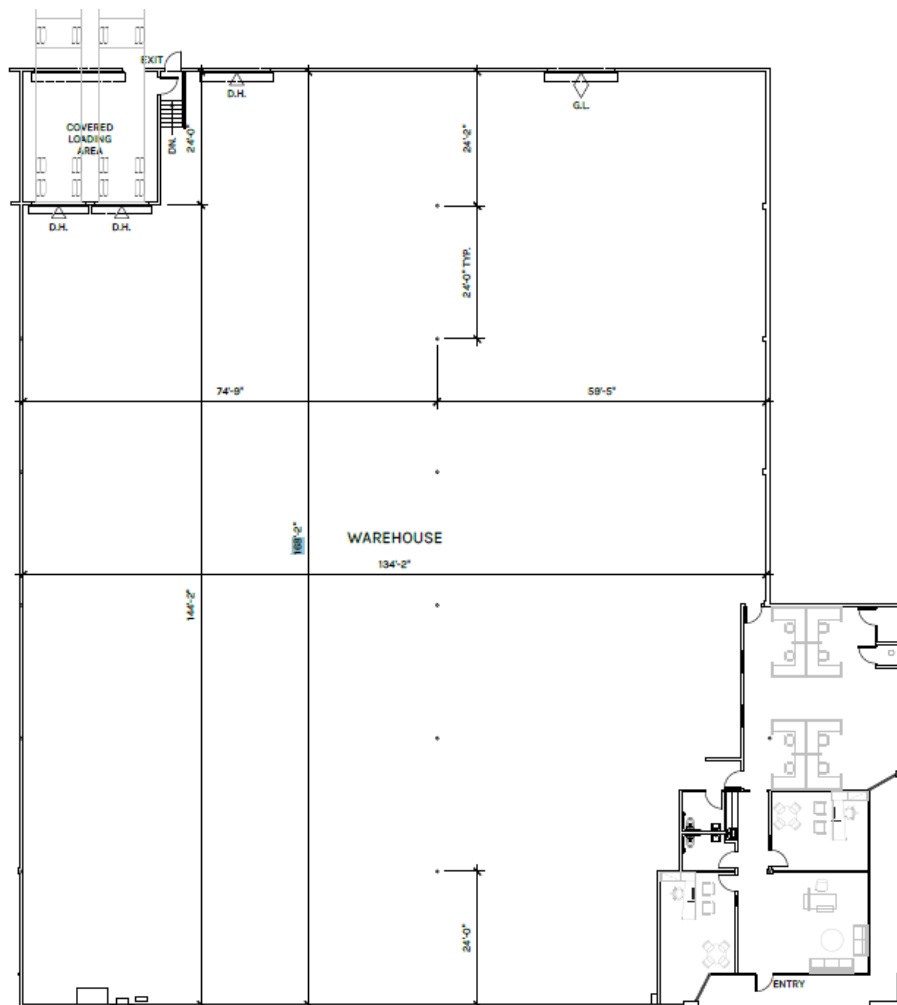


PROPERTY HIGHLIGHTS

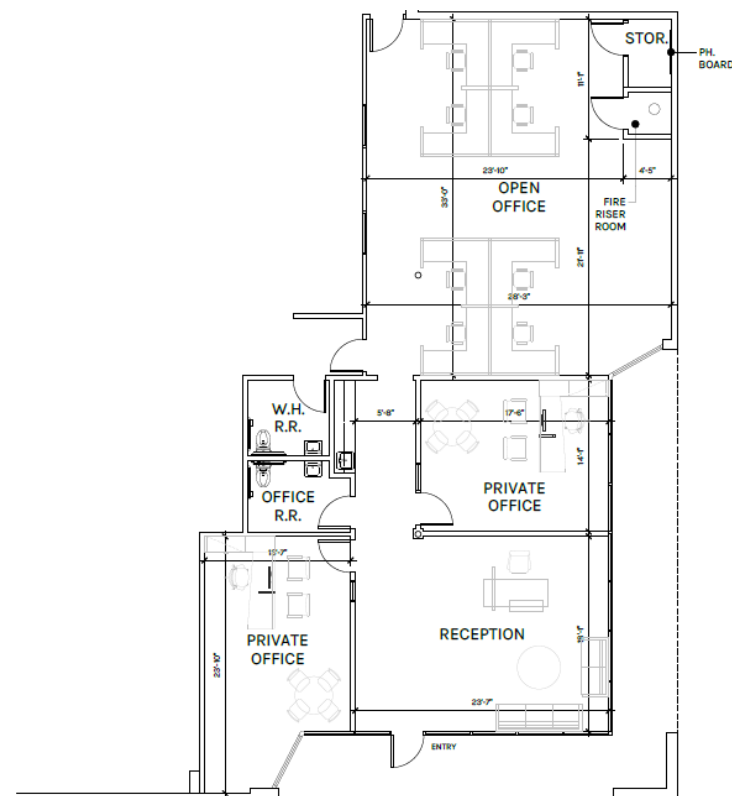
- 14955 Salt Lake: 46,653sf, 3,475sf office, 4DH, 1GL, 2,000 Amps, Large Secured Yard
- 14971 Salt Lake: 24,592 sf, 2,221sf office, 3 DH, 1GL, 400 Amps
- 24' Clear Height
- ESFR Sprinkler System
- Immediate Access to the (60) Freeway via 7th Ave.
- Proximity to (60), (605) & (10) Freeways
- Western Industry Location
- Fully Renovated Building
- Institutionally Managed Business Park
- Low CAM Fees



WAREHOUSE PLAN



OFFICE PLAN



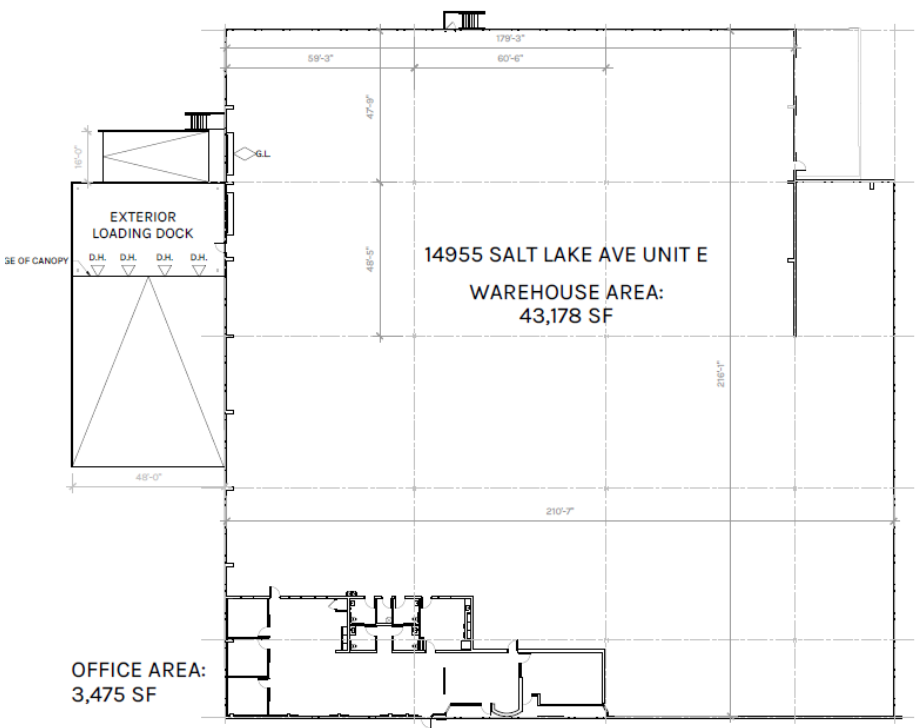
WAREHOUSE
22,371 SF

OFFICE
2,221 SF

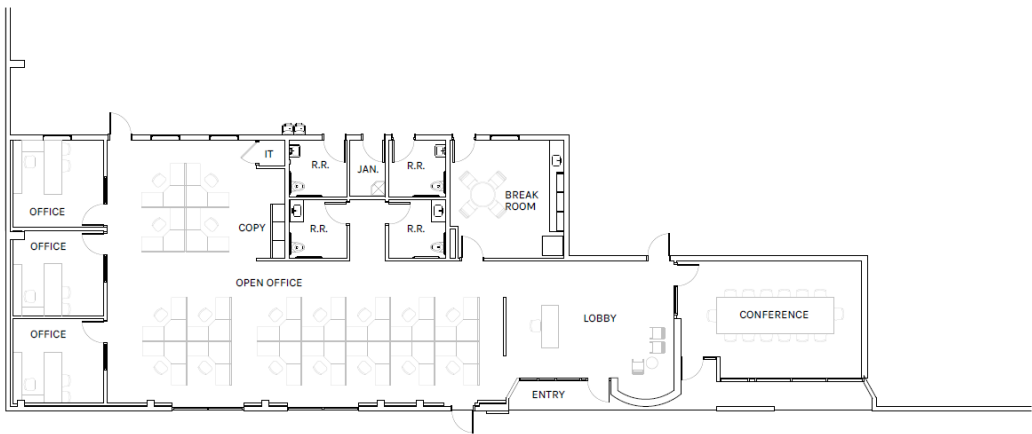
TOTAL
24,592 SF

PLAN LAYOUT SUBJECT TO FIELD CONDITIONS AND MAY DIFFER FROM PLAN AS SHOWN. ALL INFORMATION PRESENTED ON THIS DRAWING IS PRESUMED TO BE ACCURATE. HOWEVER TENANT SHOULD VERIFY PERTINENT INFORMATION PRIOR TO COMMITTING TO A LEASE. ANY FURNITURE OR APPLIANCES SHOWN ON PLAN ARE FOR CONCEPT ONLY AND WILL BE TENANT PROVIDED.

WAREHOUSE PLAN



OFFICE PLAN

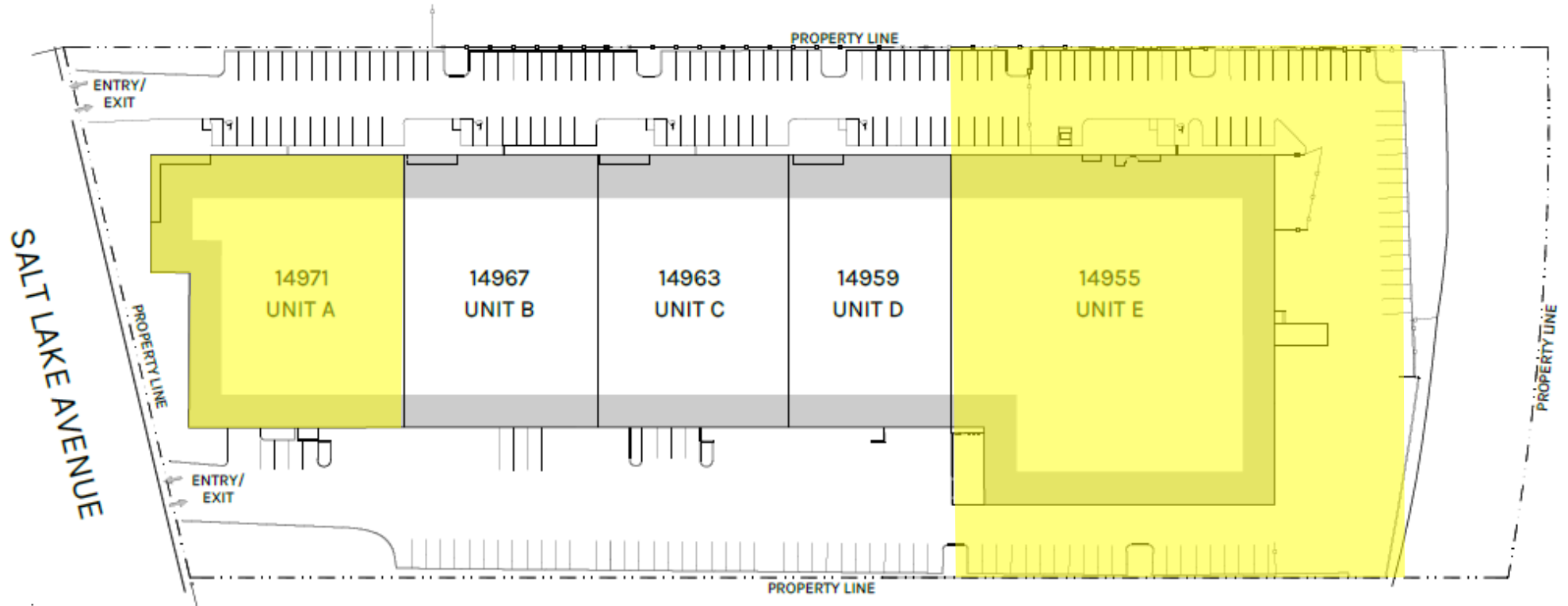


WAREHOUSE
43,178 SF

OFFICE
3,475 SF

TOTAL
46,653 SF

PLAN LAYOUT SUBJECT TO FIELD CONDITIONS AND MAY DIFFER FROM PLAN AS SHOWN. ALL INFORMATION PRESENTED ON THIS DRAWING IS PRESUMED TO BE ACCURATE, HOWEVER TENANT SHOULD VERIFY PERTINENT INFORMATION PRIOR TO COMMITTING TO A LEASE. ANY FURNITURE OR APPLIANCES SHOWN ON PLAN ARE FOR CONCEPT ONLY AND WILL BE TENANT PROVIDED.





Leasing Contacts

CHRIS TOLLES

Executive Managing Director
213.955.5129
chris.tolles@cushwake.com
LIC # 01459899

MAYA SCHIRN

Associate
213.955.5129
maya.schirn@cushwake.com
LIC # 02237054

ERIK LARSON

Executive Managing Director
213.955.5126
erik.larson@cushwake.com
LIC # 01213790



**Rexford
Industrial**