

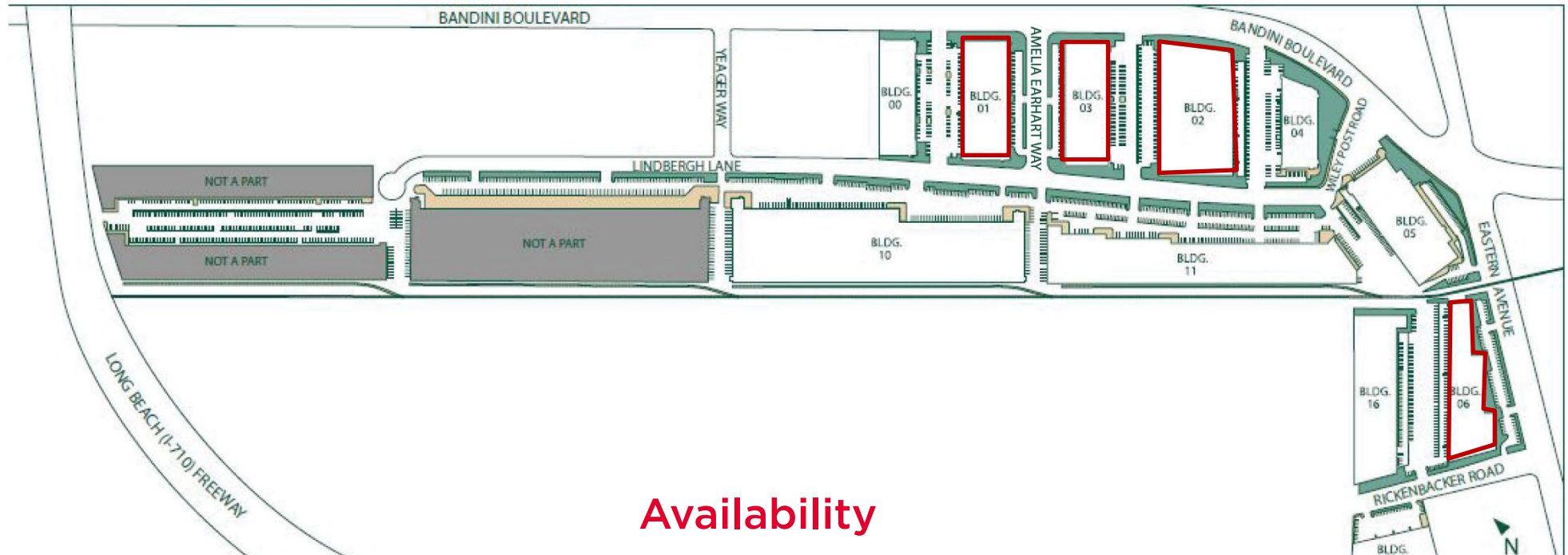


## Property Highlights

- Premier Class A Multi-Tenant Industrial Park
- A 1.2 Million SF Campus with Units Ranging from 4,000 SF to 100,000 SF
- Immediate Access to (710) and (5) Freeways
- Abundant Dock High Loading
- 24' Minimum Clearance







## Availability

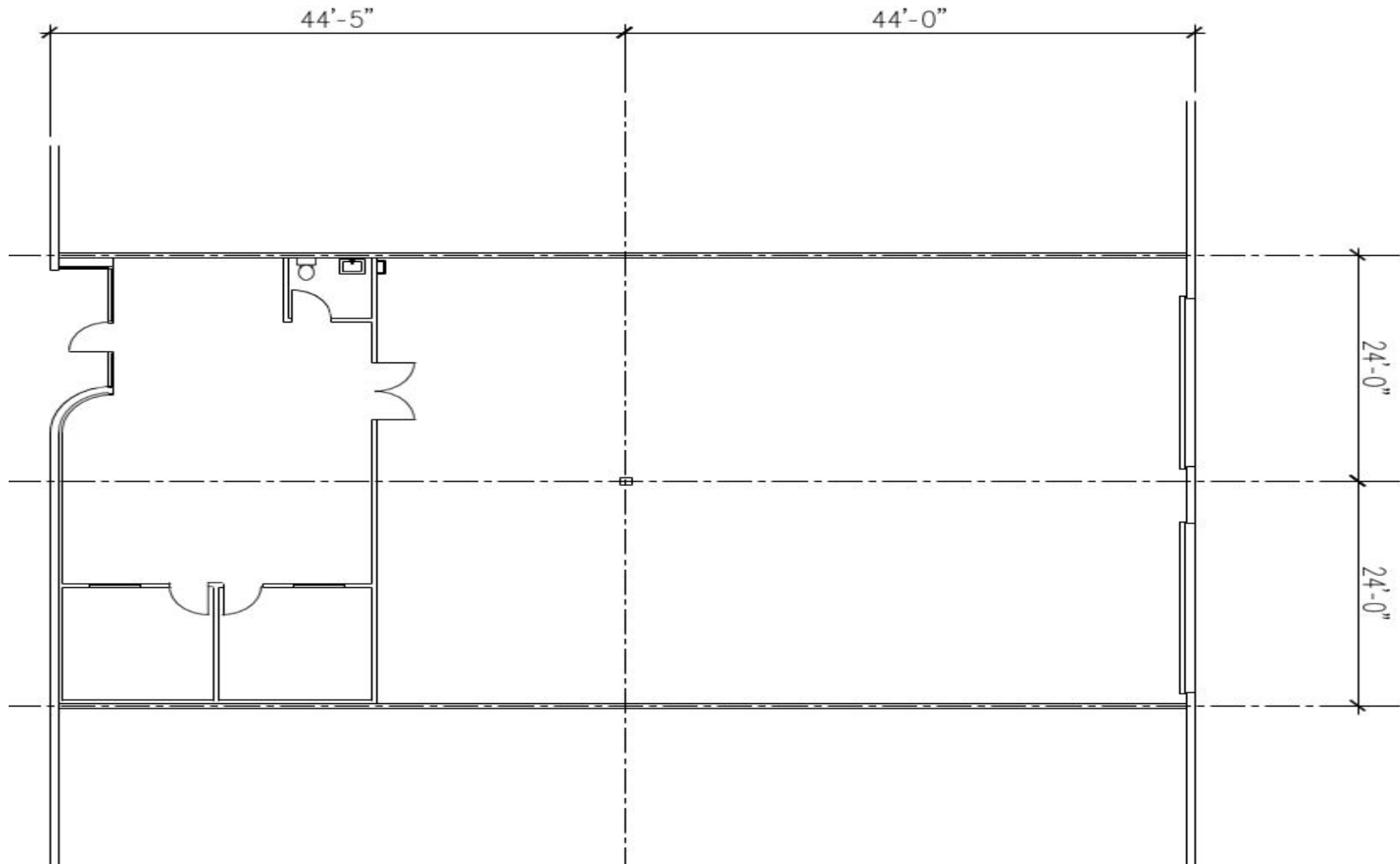
Bldg	Address	SF	Office SF	DH	GL	Rate/SF
6	4839 S Eastern Avenue	6,624	1,000	2	0	\$1.65 NNN
6	4835 S Eastern Avenue	9,936	1,586	3	1	\$1.65 NNN
6	4841 S Eastern Avenue	12,365	2,325	2	0	\$1.65 NNN
1	5628 Bandini Boulevard	13,825	3,000	4	0	\$1.65 NNN
3	5598 Bandini Boulevard	22,685	1,878	4	0	\$1.60 NNN

**Rich Grande**  
Managing Director  
+1 213 629 6552  
rich.grande@cushwake.com  
LIC #01056963

**Erik Larson**  
Executive Managing Director  
+1 213 955 5126  
erik.larson@cushwake.com  
LIC #01213790

**Paul Sims**  
Director  
+1 213 955 5153  
paul.sims@cushwake.com  
LIC #02007631

## 4839 S Eastern Ave Site Plan



**Rich Grande**  
Managing Director  
+1 213 629 6552  
rich.grande@cushwake.com  
LIC #01056963

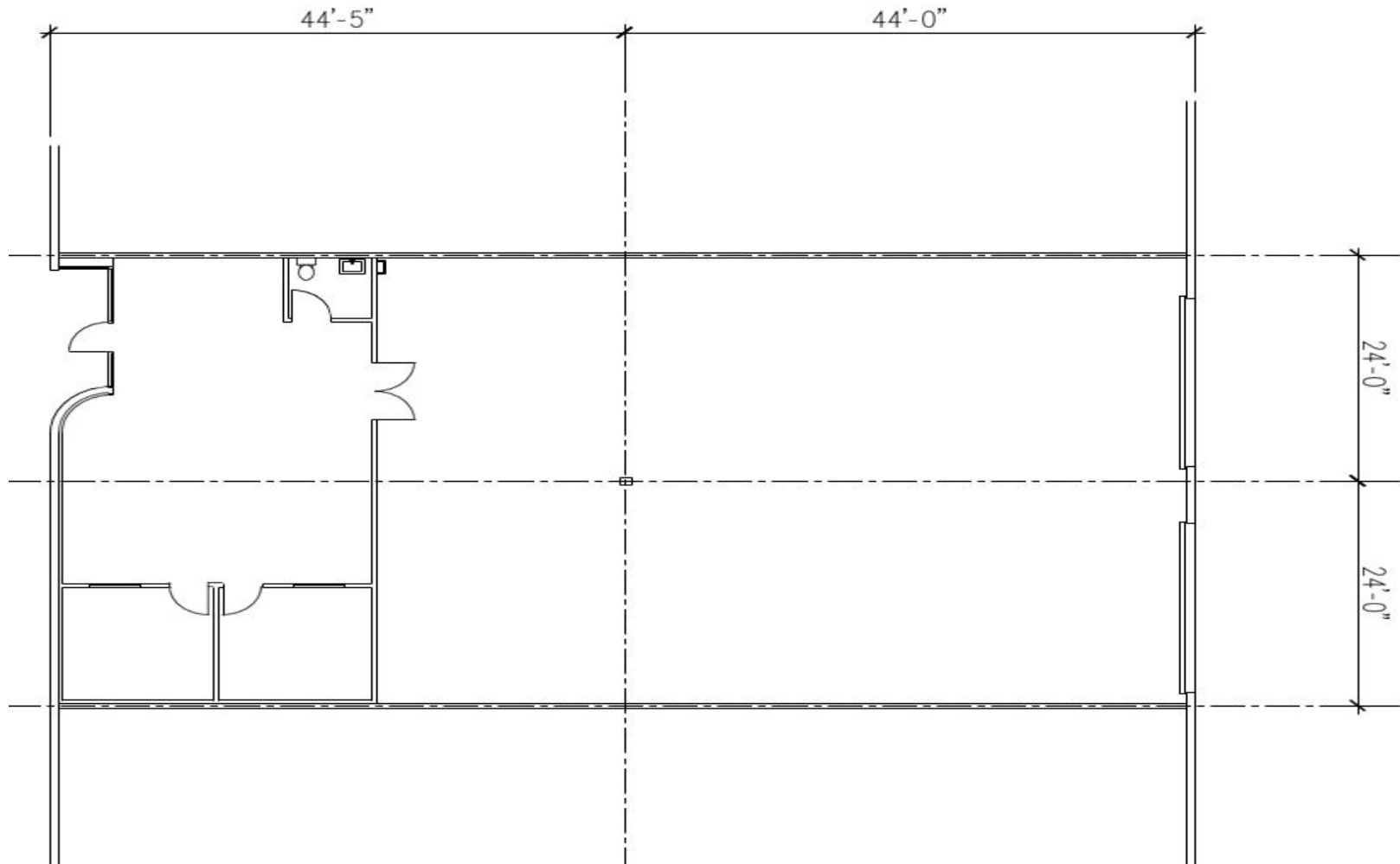
**Erik Larson**  
Executive Managing Director  
+1 213 955 5126  
erik.larson@cushwake.com  
LIC #01213790

**Paul Sims**  
Director  
+1 213 955 5153  
paul.sims@cushwake.com  
LIC #02007631



Cushman & Wakefield of California, Inc.  
Lic. #00616335  
900 Wilshire Blvd., Suite 2400  
Los Angeles, CA 90017  
[cushmanwakefield.com](http://cushmanwakefield.com)

## 4835 S Eastern Ave Site Plan



**Rich Grande**  
Managing Director  
+1 213 629 6552  
rich.grande@cushwake.com  
LIC #01056963

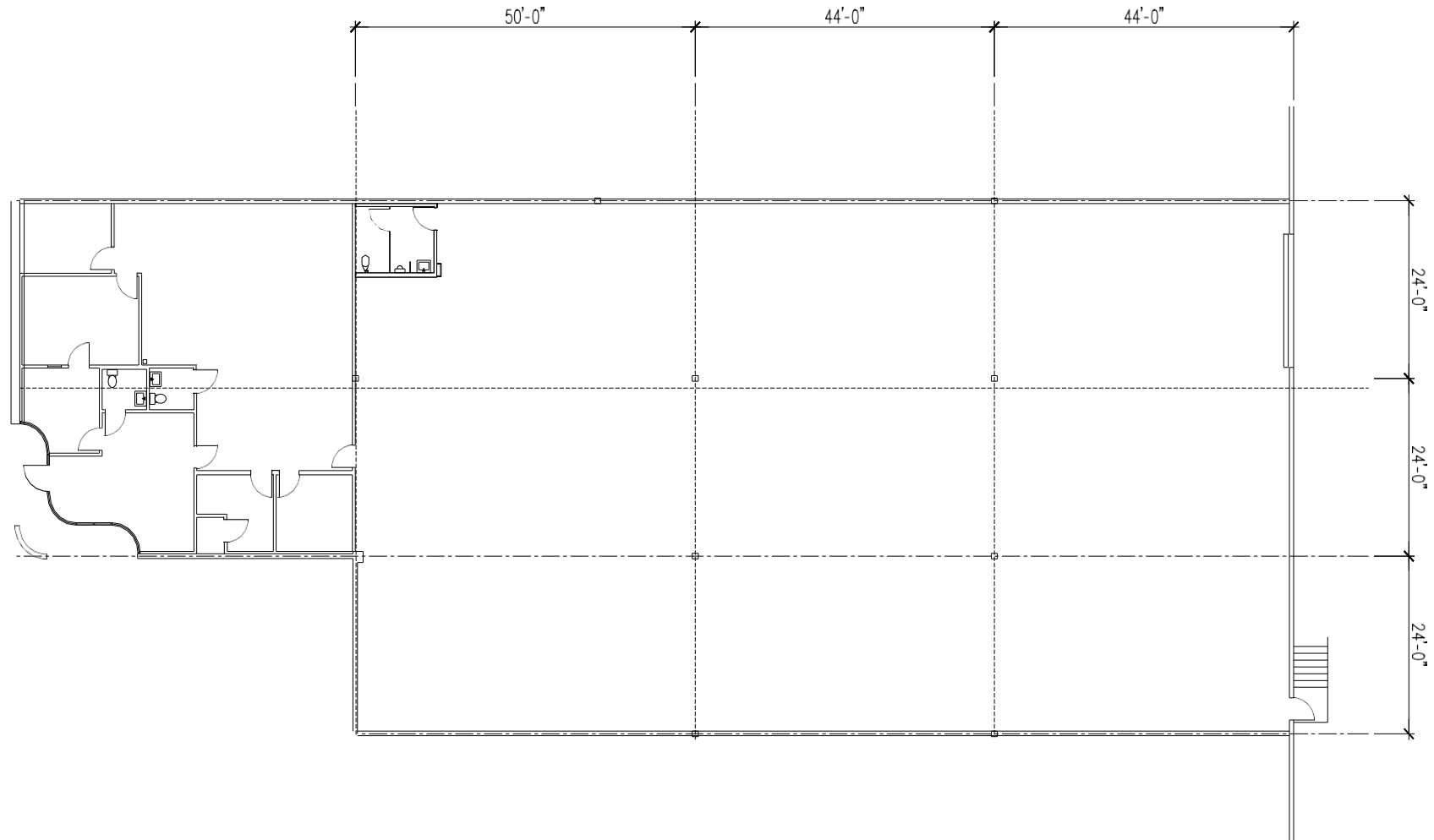
**Erik Larson**  
Executive Managing Director  
+1 213 955 5126  
erik.larson@cushwake.com  
LIC #01213790

**Paul Sims**  
Director  
+1 213 955 5153  
paul.sims@cushwake.com  
LIC #02007631



Cushman & Wakefield of California, Inc.  
Lic. #00616335  
900 Wilshire Blvd., Suite 2400  
Los Angeles, CA 90017  
[cushmanwakefield.com](http://cushmanwakefield.com)

## 4841 S Eastern Ave Site Plan



**Rich Grande**  
Managing Director  
+1 213 629 6552  
rich.grande@cushwake.com  
LIC #01056963

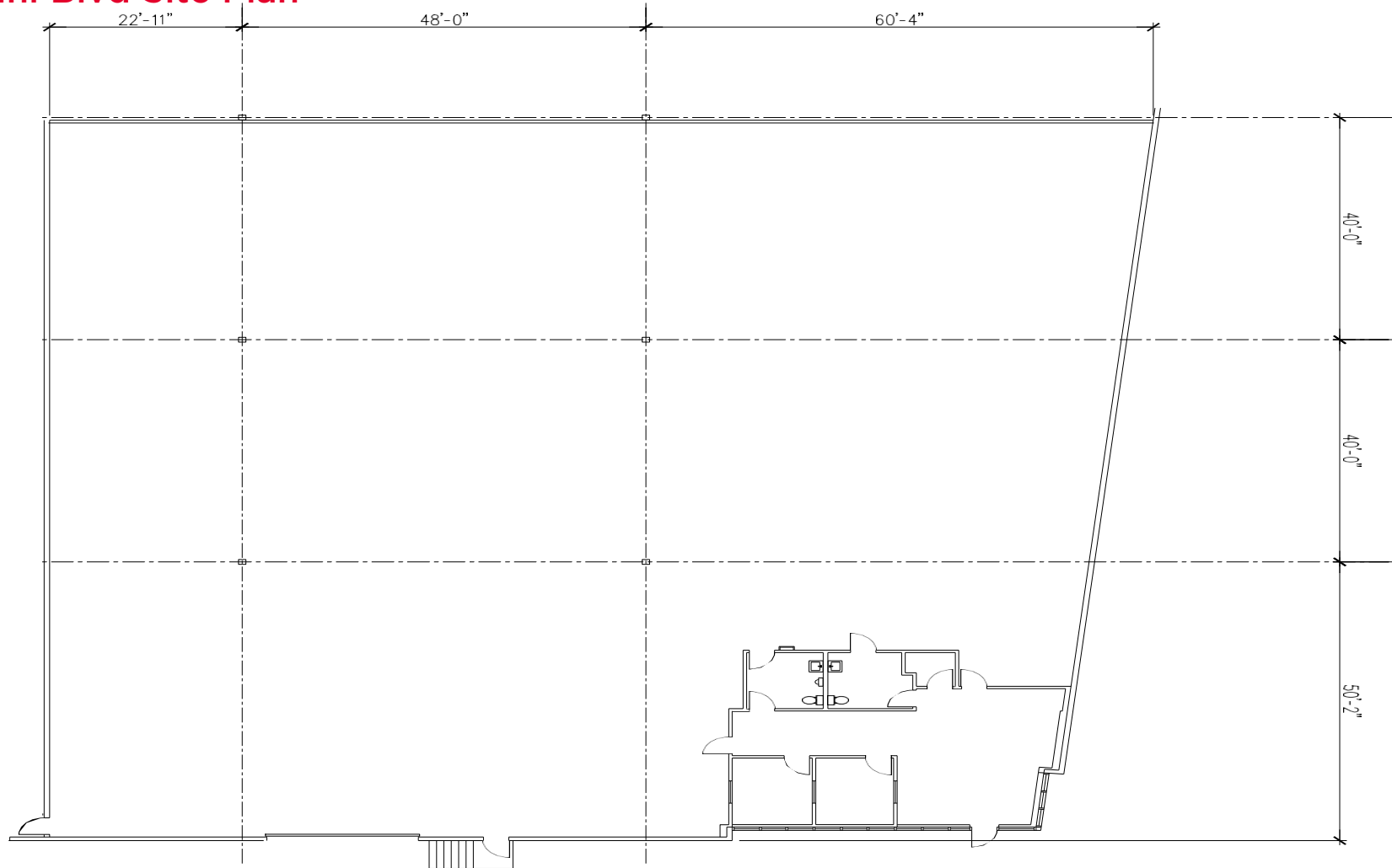
**Erik Larson**  
Executive Managing Director  
+1 213 955 5126  
erik.larson@cushwake.com  
LIC #01213790

**Paul Sims**  
Director  
+1 213 955 5153  
paul.sims@cushwake.com  
LIC #02007631



Cushman & Wakefield of California, Inc.  
Lic. #00616335  
900 Wilshire Blvd., Suite 2400  
Los Angeles, CA 90017  
[cushmanwakefield.com](http://cushmanwakefield.com)

## 5628 Bandini Blvd Site Plan



**Rich Grande**  
Managing Director  
+1 213 629 6552  
rich.grande@cushwake.com  
LIC #01056963

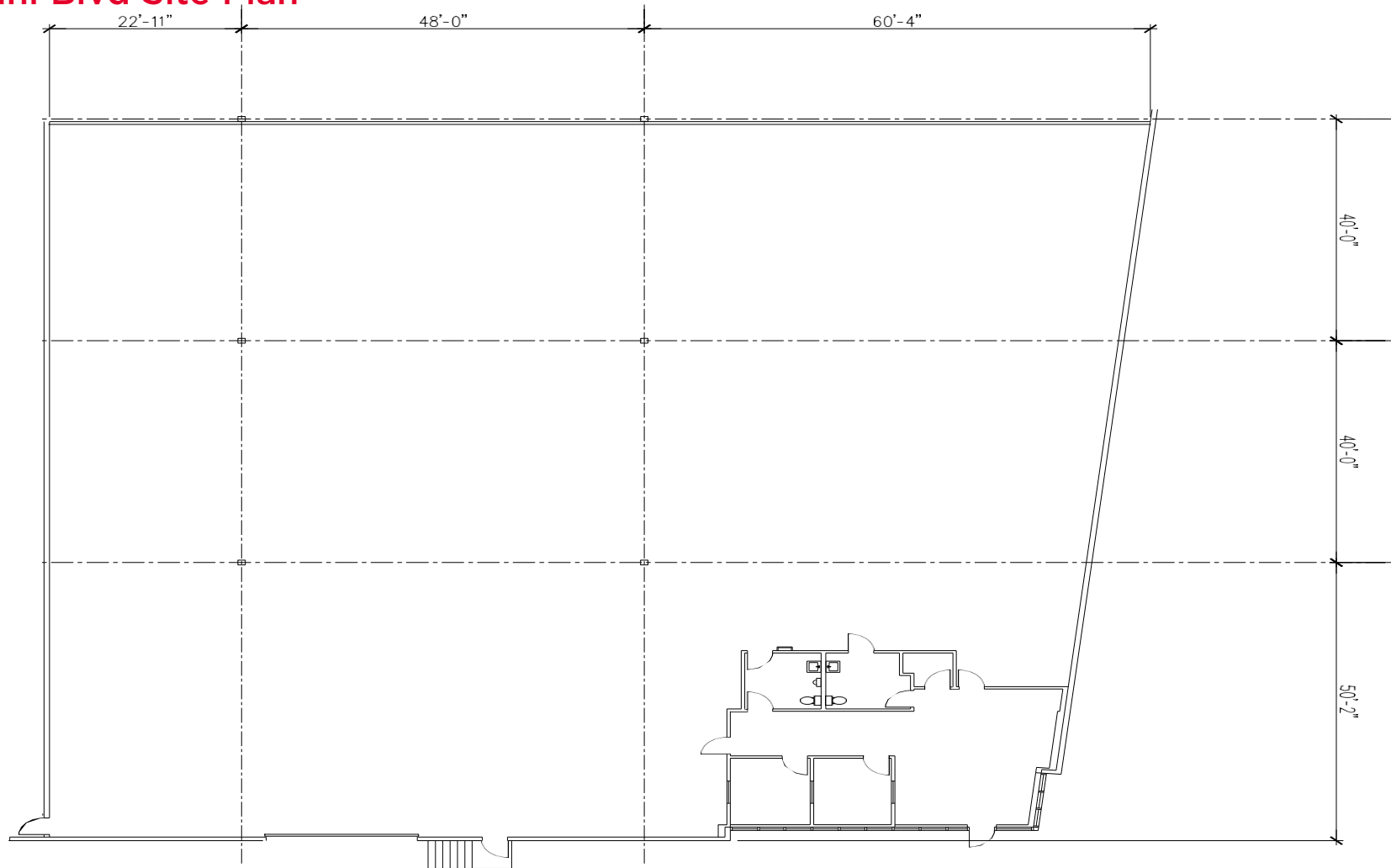
**Erik Larson**  
Executive Managing Director  
+1 213 955 5126  
erik.larson@cushwake.com  
LIC #01213790

**Paul Sims**  
Director  
+1 213 955 5153  
paul.sims@cushwake.com  
LIC #02007631



Cushman & Wakefield of California, Inc.  
Lic. #00616335  
900 Wilshire Blvd., Suite 2400  
Los Angeles, CA 90017  
**cushmanwakefield.com**

## 5598 Bandini Blvd Site Plan



**Rich Grande**  
Managing Director  
+1 213 629 6552  
rich.grande@cushwake.com  
LIC #01056963

**Erik Larson**  
Executive Managing Director  
+1 213 955 5126  
erik.larson@cushwake.com  
LIC #01213790

**Paul Sims**  
Director  
+1 213 955 5153  
paul.sims@cushwake.com  
LIC #02007631



Cushman & Wakefield of California, Inc.  
Lic. #00616335  
900 Wilshire Blvd., Suite 2400  
Los Angeles, CA 90017  
[cushmanwakefield.com](http://cushmanwakefield.com)