

Freestanding Building - Large Yard
Dock High Loading
2,000 Amps Power



INDUSTRIAL BUILDING – FOR LEASE

± 71,842 SF WAREHOUSE ON ± 3.40 ACRES

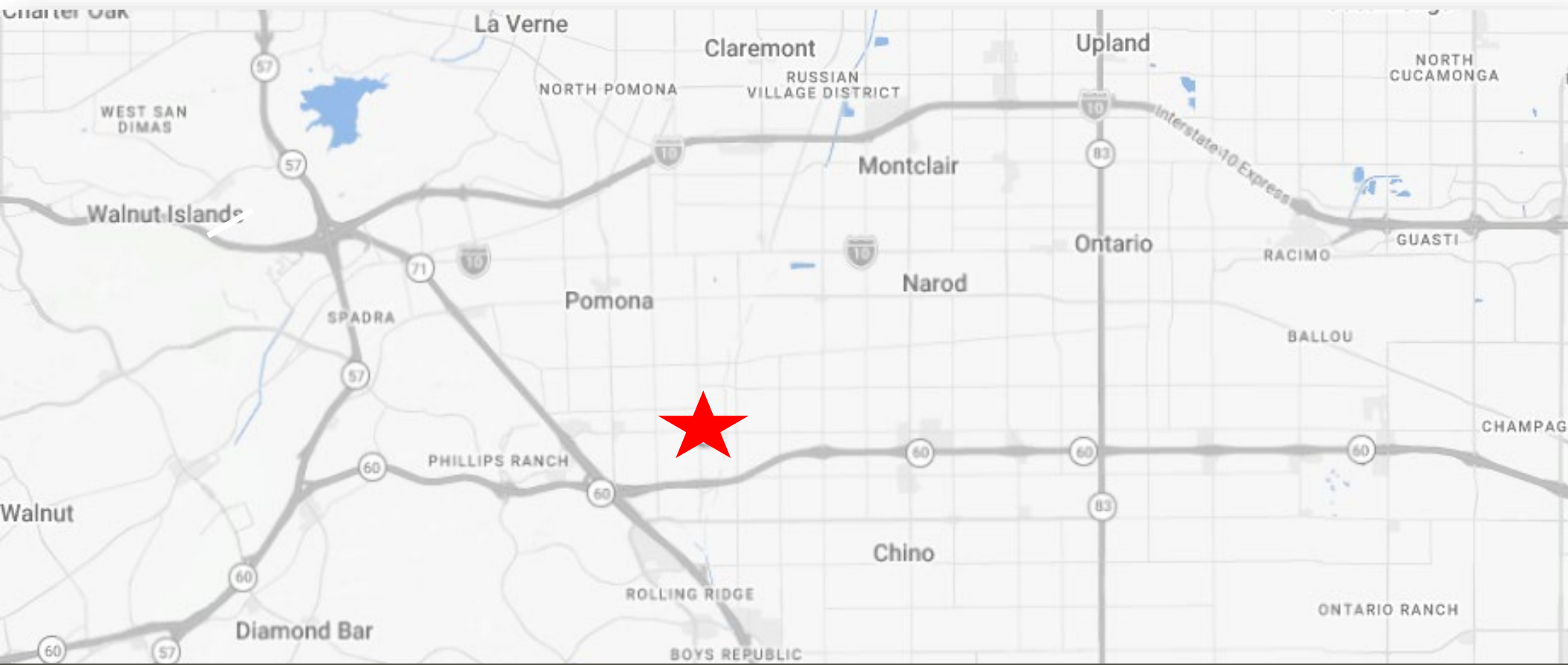
1250 Philadelphia St, Pomona, CA 91766

KOLL

 **CUSHMAN &
WAKEFIELD**

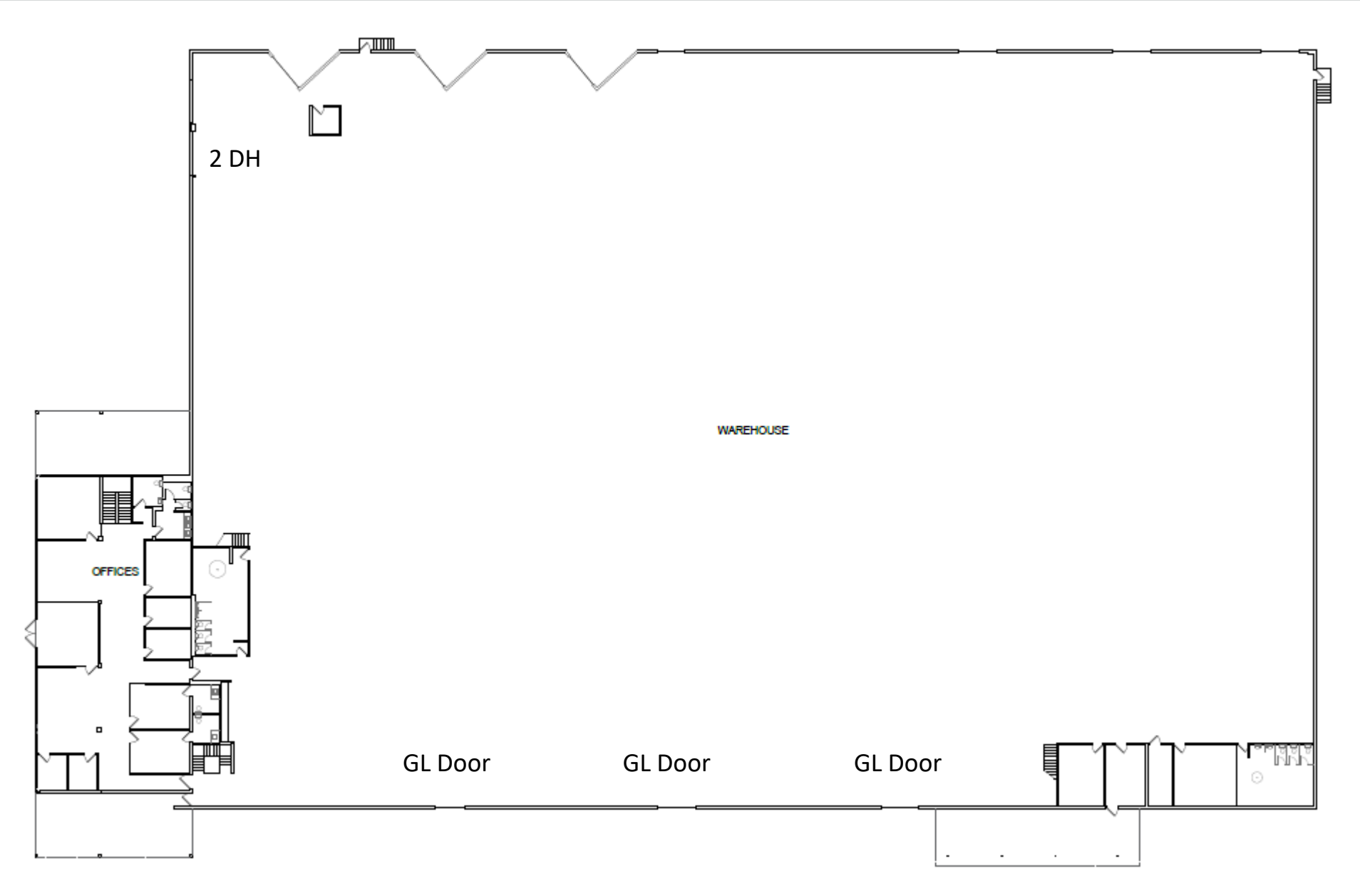
LOCATION & HIGHLIGHTS

1250 Philadelphia St, Pomona, CA

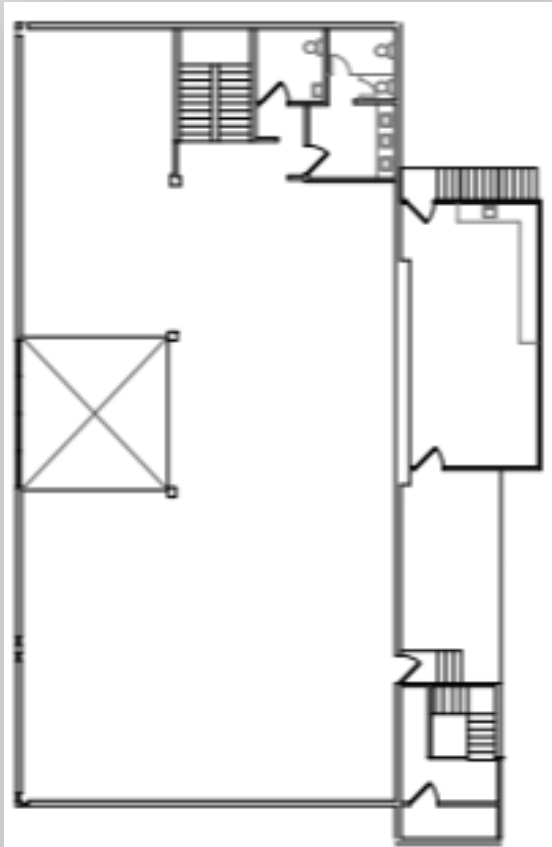


PROPERTY HIGHLIGHTS

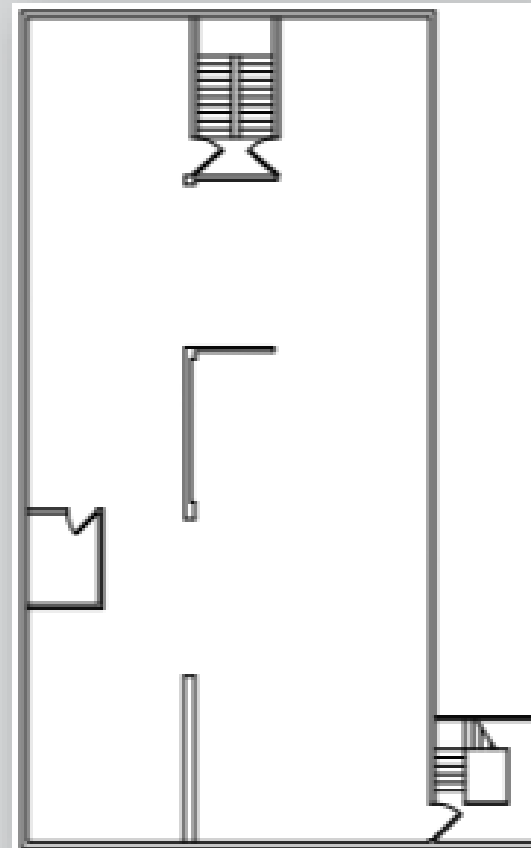
- +/- 71,812sf Freestanding Industrial Building
- Situated on +/- 3.40 acres
- 8,342sf Two-Story Offices
- SF Includes 3,565 SF of Basement
- 18' Clear Height
- LED Warehouse lighting
- Large Yard
- 2 DH Positions, 3 GL Doors
- Power: 2000 Amps | 277/480 v
- Immediate Access to (60) Freeway via Reservoir St.
- Access to (71), (10), and (57) Freeways
- Nearby Retail Amenities
- Adjacent to Multiple Recent Industrial Developments
- 70 Parking Spaces
- Six Restrooms
- Outstanding Eastern San Gabriel Valley Location
- Potential Rail
- Access to LA Port Complex & Ontario International Airport



Mezzanine Office



Basement





CONTACTS



Chris Tolles
 Executive Managing Director
 +1 213 955 5129
chris.tolles@cushwake.com
 License: 01459899

Erik Larson
 Executive Managing Director
 +1 213 955 5126
erik.larson@cushwake.com
 License: 01213790

Robin Dodson
 Executive Managing Director
 +1 213 955 6460
robin.dodson@cushwake.com
 License: 00956329

Maya Schirn
 Associate
 +1 213 236 4931
maya.schirn@cushwake.com
 License: 02237054

900 Wilshire Boulevard,
 Suite, 2400
 Los Angeles, CA 90017
 +1 213 955 5100
 License: 0061635